



**Atwool**

**CATALOG OF PARTITIONS**



The logo for Atwood features the word "Atwood" in a bold, black, sans-serif font. The letter "A" is stylized with a green outline of a house roof integrated into its top. A solid green horizontal bar is positioned below the "A".

**Atwood**



# COMPREHENSIVE SOLUTIONS FOR INSULATION IN EUROPEAN CONSTRUCTION STANDARDS

A+WOOOL provides an wood wool isolation for all type of constructions. It combines high standards required by low - energy buildings:



with ecological friendly solutions during the production process :

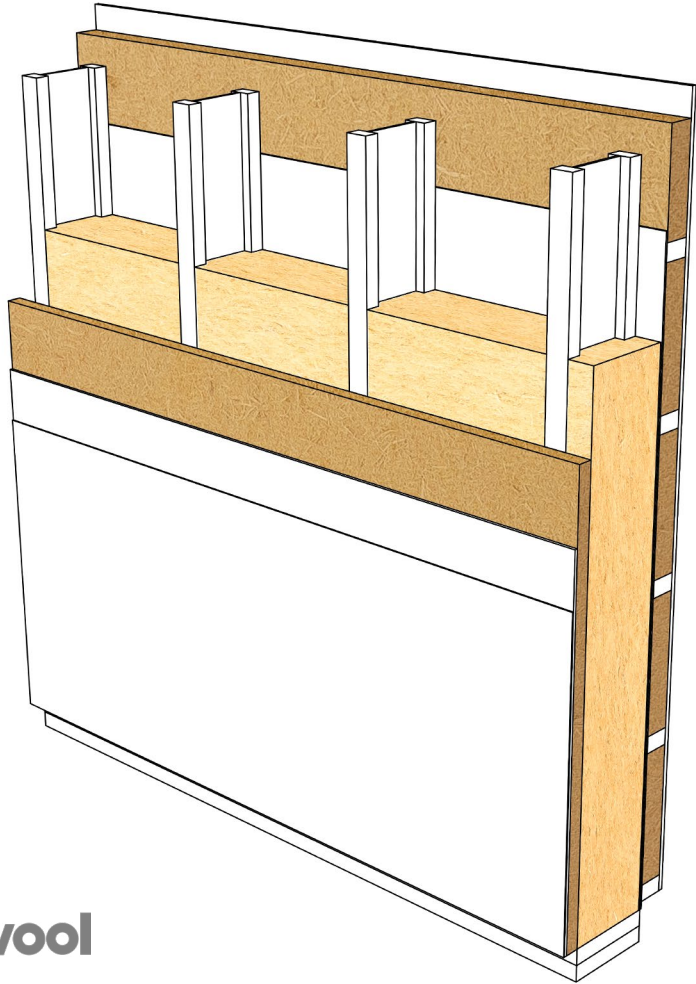


## | COMPOSITION :

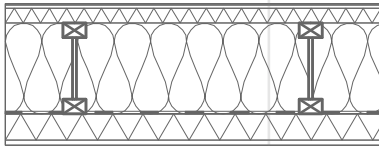
94,5% natural conifers fibers

5,5% paraffin emulsion MDI resin

Many years of experience, gained both in design and construction, encourage us to go a step further and create an full complex solution of partition isolation. Designing partitions in low - energy standard became easy, science we have solved and calculated all the details. Here we present our work.

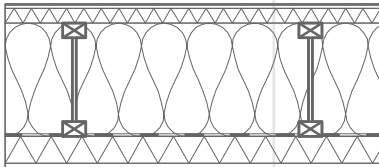


# | External wall - plaster



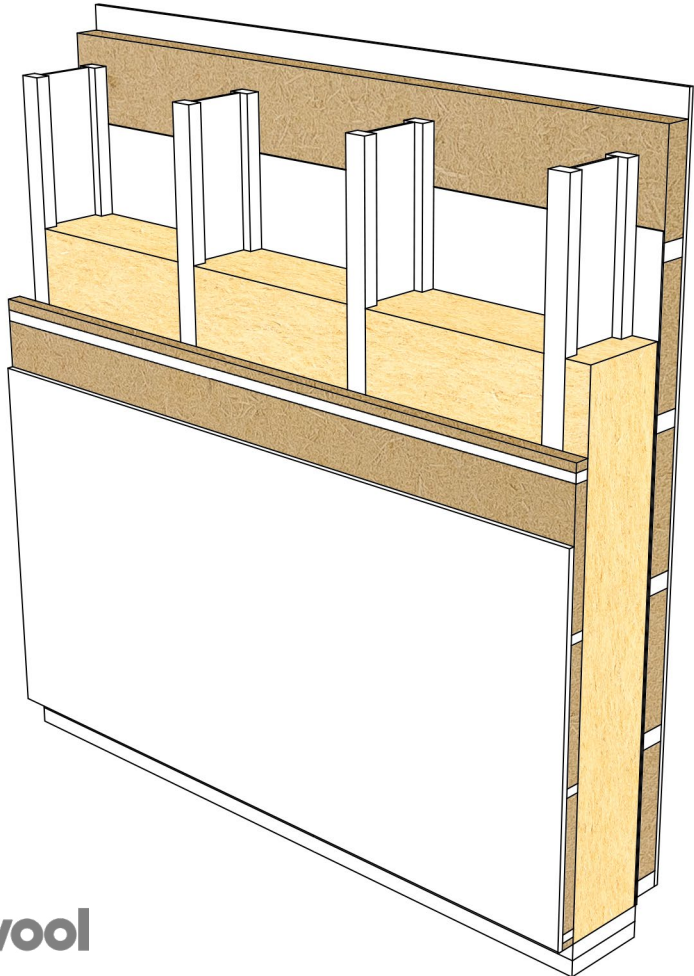
| U= 0,12 W/m²K

silicone resin plaster	3 mm
adhesive / armour render	4 mm
adhesive / armour render	4 mm
A+WOOOL wall	40 mm
A+WOOOL fill / I-beam	240 mm
aluminum foil	
A+WOOOL combi / timber frame	70 mm
Fermacell gypsum fibre board	12,5 mm
sum	373,5 mm



| U= 0,11 W/m²K

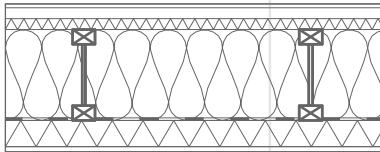
silicone resin plaster	3 mm
adhesive / armour render	4 mm
adhesive / armour render	4 mm
A+WOOOL wall	40 mm
A+WOOOL fill / I-beam	300 mm
aluminum foil	
A+WOOOL combi / timber frame	70 mm
Fermacell gypsum fibre board	12,5 mm
sum	433,5 mm





# | External wall - elevation cladding

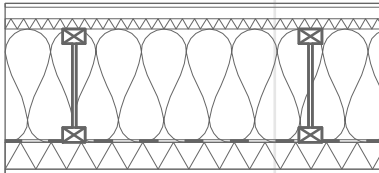
NF  
40



| U= 0,13 W/m²K

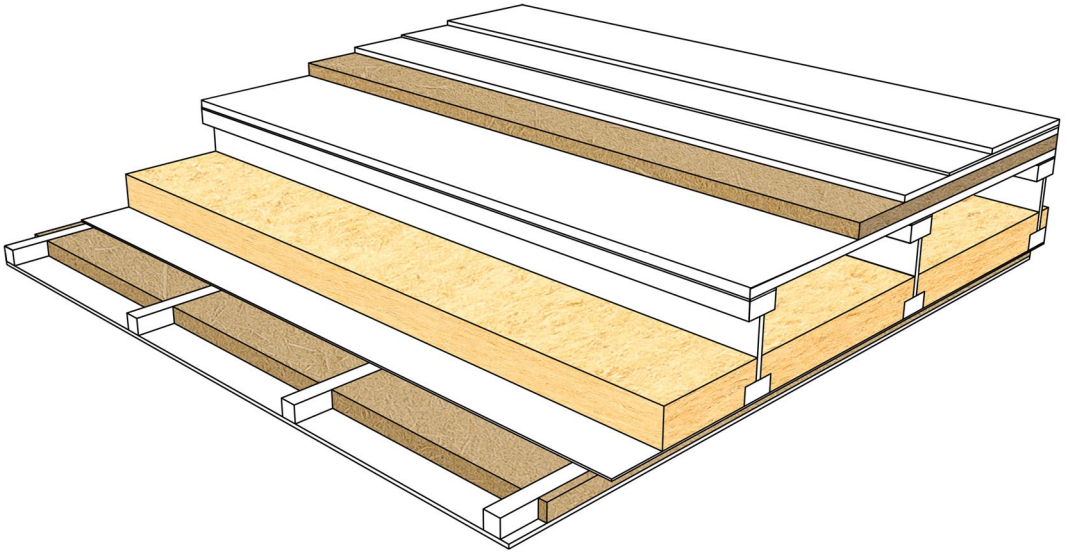
elevation cladding	10 mm
rear ventilated level	30 mm
A+Wool roof	28 mm
A+Wool fill / I-beam	240 mm
aluminum foil	
A+Wool combi / timber frame	70 mm
Fermacell gypsum fibre board	12,5 mm
sum	391 mm

NF  
15

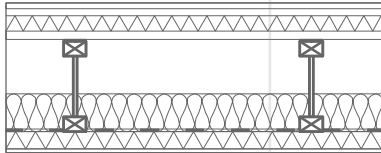


| U= 0,11 W/m²K

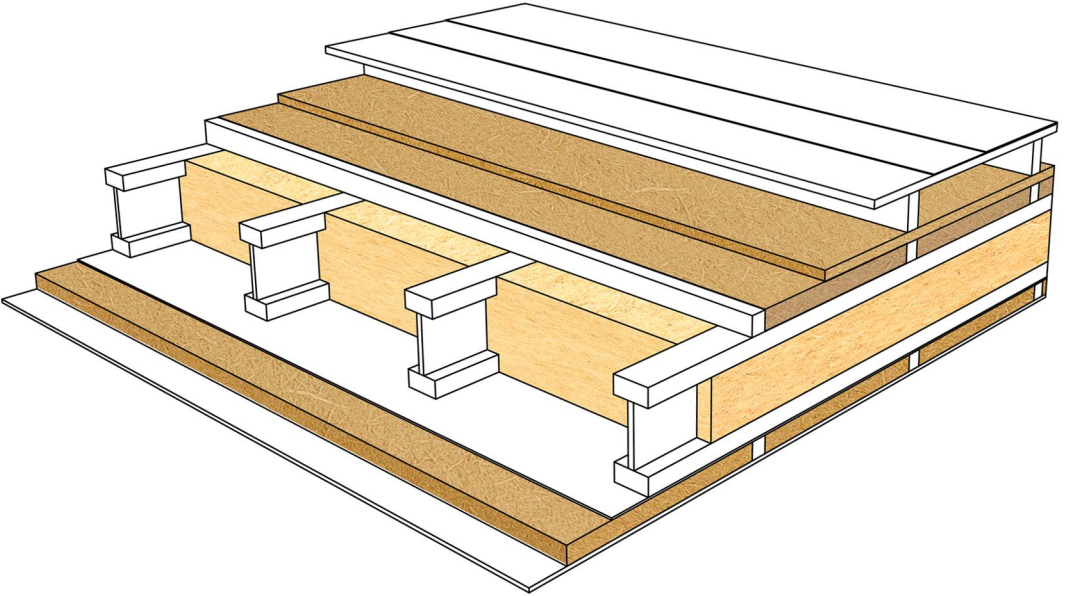
elevation cladding	10 mm
rear ventilated level	30 mm
A+Wool roof	28 mm
A+Wool fill / I-beam	300 mm
aluminum foil	
A+Wool combi / timber frame	70 mm
Fermacell gypsum fibre board	12,5 mm
sum	451 mm



# | Ceiling

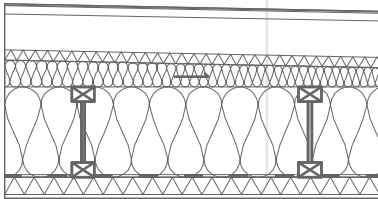


lamination	15 mm
MFP board	18 mm
<b>A+Wool</b> combi	40 mm
MFP board	22 mm
rubber pad	
<b>A+Wool</b> combi / I-beam	240 mm
aluminum foil	
<b>A+Wool</b> combi / C24 45x45	45 mm
Fermacell gypsum fibre board	10 mm
sum	390 mm



# | Ventilated flat roof

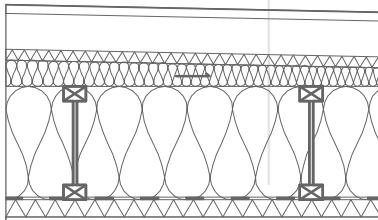
NF  
40



| U= 0,12 W/m²K

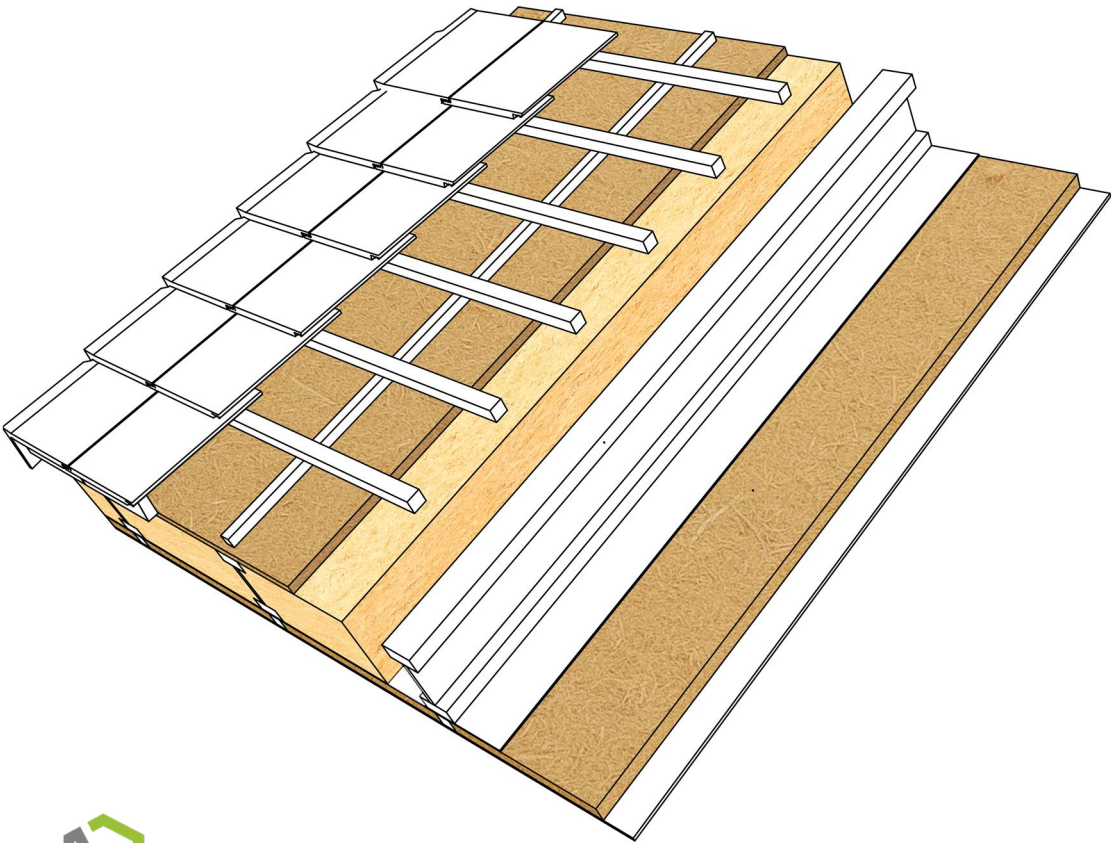
EPDM	1,5 mm
Geomembrane PP	
MFP Board	22 mm
Rear ventilated level	95 mm
A+Wool roof	28 mm
A+Wool fill / timber frame	45 mm
A+Wool fill / I-beam	240 mm
aluminum foil	
A+Wool combi / timber frame	45 mm
Fermacell gypsum fibre board	10 mm
sum	489 mm

NF  
15



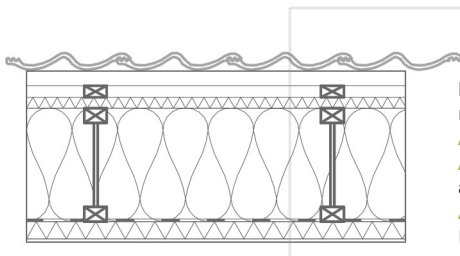
| U= 0,10 W/m²K

EPDM	1,5 mm
Geomembrane PP	
MFP Board	22 mm
Rear ventilated level	95 mm
A+Wool roof	28 mm
A+Wool fill / timber frame	45 mm
A+Wool fill / I-beam	300 mm
aluminum foil	
A+Wool combi / timber frame	45 mm
Fermacell gypsum fibre board	10 mm
sum	549 mm



# | Sloped roof

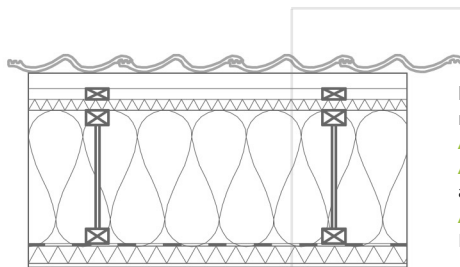
NF  
40



battens & roof cladding	103 mm
rear ventilated level	30 mm
A+Wool roof	28 mm
A+Wool fill / I-beam	280 mm
aluminum foil	
A+Wool combi / timber frame	45 mm
Fermacell gypsum fibre board	10 mm
sum	496 mm

| U= 0,12 W/m²K

NF  
15



battens & roof cladding	103 mm
rear ventilated level	30 mm
A+Wool roof	28 mm
A+Wool fill / I-beam	360 mm
aluminum foil	
A+Wool combi / timber frame	45 mm
Fermacell gypsum fibre board	10 mm
sum	576 mm

| U= 0,10 W/m²K







The image features a dense forest of tall, thin pine trees, likely spruce or fir, viewed from an elevated perspective. The trees are dark green, with some lighter green foliage visible in the lower right. A large, bright green diagonal shape cuts across the upper left portion of the image, creating a modern, graphic design element. The background is slightly hazy, suggesting a misty or overcast day.

**A+wool**

ul. Ostroroga 34  
52-421 Wrocław  
POLAND

+48 666 130 304  
[www.apluswool.eu](http://www.apluswool.eu)  
[office@apluswool.eu](mailto:office@apluswool.eu)